

Between us, ideas become reality®

W

wood
ceilings

ARMSTRONG WOOD CEILINGS

Wood is renowned for its natural beauty and warmth, offering a luxurious, modern interior finish.

Armstrong has selected **the finest quality wood finish**, that strictly complies with all fire requirements, without compromising acoustic performance and environmental consideration.

Two types available: laminate, for a durable and affordable option, and veneer, with real wood for a prestigious, high class solution.

The tiles and panels are compatible with the Armstrong grid system, enabling ease of installation as well as safe and secure downward accessibility to the plenum for electrical and HVAC maintenance using the Vector Wood solution.

The panels feature the patented **Vector edge detail** to produce a 6mm reveal that minimises the visible grid, thereby creating a ceiling that is much more monolithic in appearance than ordinary suspended ceilings.

For improved **acoustical performance**, several perforation options are available for the veneer range, circular or grooved, achieving up to 0.65 α_w .

Further veneer, pattern and size options available on request.

When thinking green the first material that comes to mind is wood, for its natural and sustainable properties.



Armstrong helps to create a high quality indoor environment, selecting wood material without allergic ingredients and offering FSC® - certified wood (on request).

Armstrong wood tiles and panels are constructed using high class MDF, coated with clear UV enhanced lacquer, without the use of any solvents. The lacquer finish protects the tiles from aging and sunlight.

KEY SELECTION ATTRIBUTES

- Define a space using the natural tones of Armstrong wood ceilings
- A selection of beautiful wood finishes that also provides acoustic comfort
- Four standard pattern options available only on veneer products
- Installation with minimum plenum clearance using the Vector Wood solution.

VENEERS



Ash (ASH)

Oak (OAK)

Red Oak (ROA)

US Cherry (CHE)

US Walnut (WAL)

All Veneers have a matt finish. Variation between wood veneer panels may occur due to the natural characteristics of the wood and grain.

LAMINATES

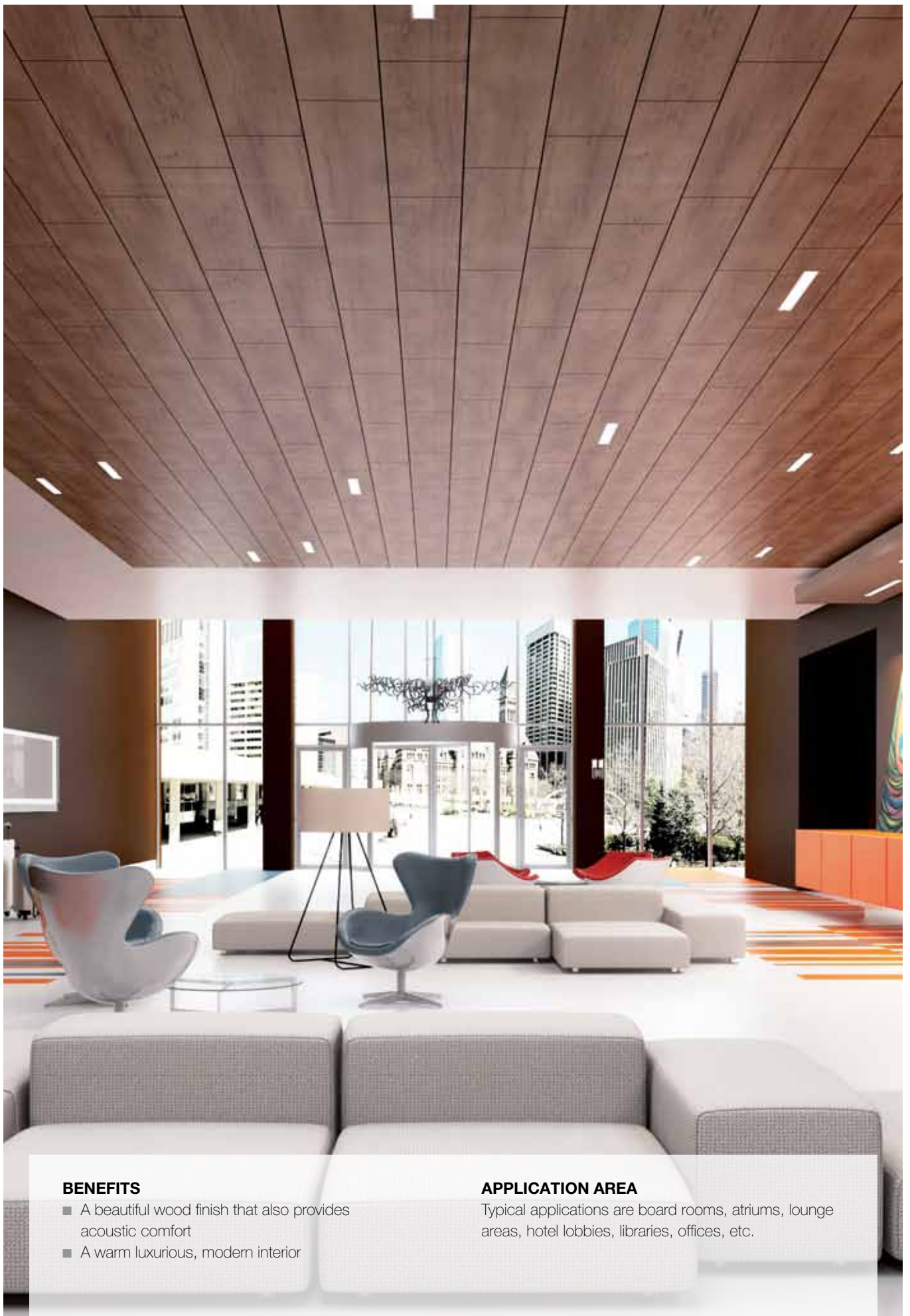


Curly Maple (CM)

Pear (PH)

Canadian Maple (MD)

Curly Maple and Pear Laminates have a semi-matt finish and the Canadian Maple Laminate has an extra-matt finish.



BENEFITS

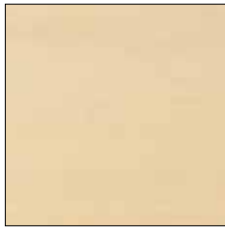
- A beautiful wood finish that also provides acoustic comfort
- A warm luxurious, modern interior

APPLICATION AREA

Typical applications are board rooms, atriums, lounge areas, hotel lobbies, libraries, offices, etc.

Product: Vector Wood V Plain US Walnut 1200 x 300 mm installed on Black Grid

SIZES



600 x 600 mm



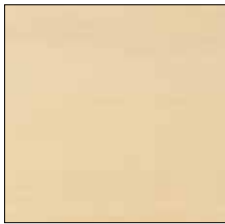
1200 x 600 mm*



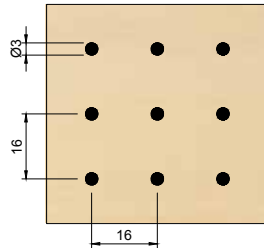
1200 x 300 mm*

* Rectangular dimensions available only on wood veneer products.

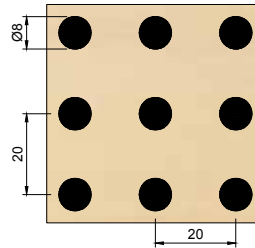
PATTERNS



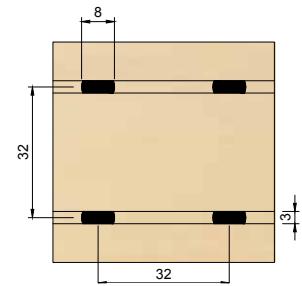
Plain



Rg 3003 (3%)*



Rg 8013 (13%)*

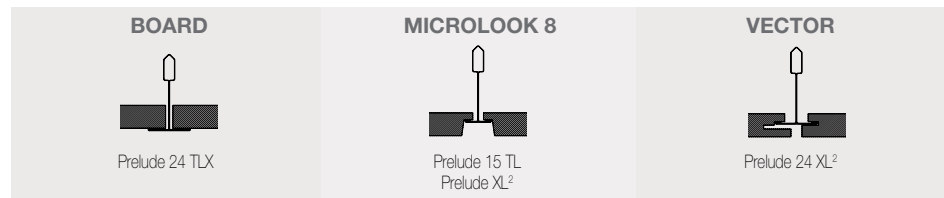


Lg 8002 (2%)*

Groove size: 3mm (w) x 3mm (d)

* Available only on wood veneer products.

RANGE



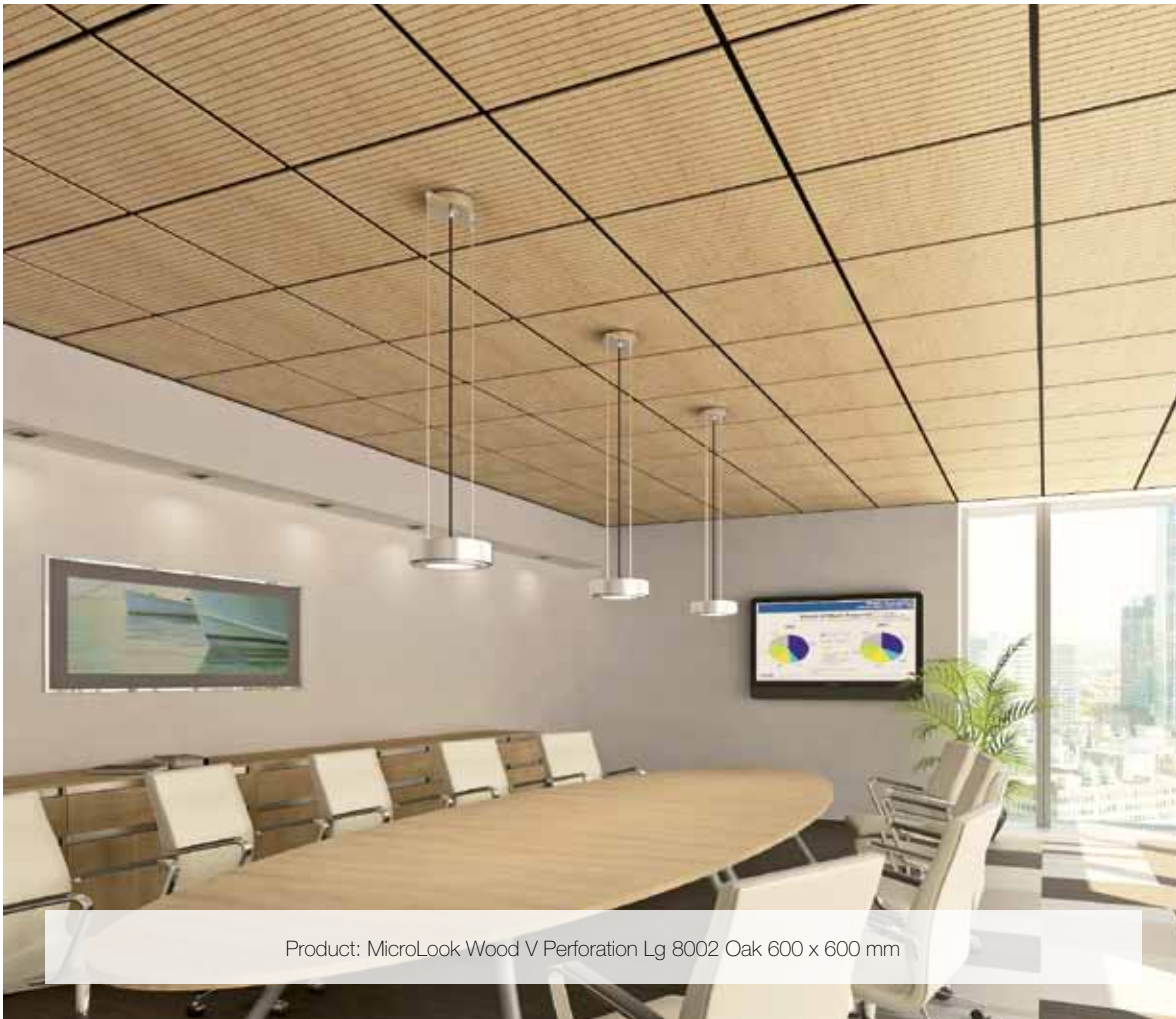
Laminates	Dimensions	BOARD	MICROLOOK 8	VECTOR
Plain	600 x 600 x 12 mm		9774 M	
Veneers				
Plain	600 x 600 x 13 mm	4982M	5006M	4994M
Plain	1200 x 300 x 13 mm	4983M	5007M	4995M
Plain	1200 x 600 x 13 mm	4984M	5008M	4996M
Rg 3003	600 x 600 x 13 mm	4985M	5009M	4997M
Rg 3003	1200 x 300 x 13 mm	4986M	5010M	4998M
Rg 3003	1200 x 600 x 13 mm	4987M	5011M	4999M
Rg 8013	600 x 600 x 13 mm	4988M	5012M	5000M
Rg 8013	1200 x 300 x 13 mm	4989M	5013M	5001M
Rg 8013	1200 x 600 x 13 mm	4990M	5014M	5002M
Lg 8002	600 x 600 x 13 mm	4991M	5015M	5003M
Lg 8002	1200 x 300 x 13 mm	4992M	5016M	5004M
Lg 8002	1200 x 600 x 13 mm	4993M	5017M	5005M

It is recommended that Wood tiles are installed with main runners at 600mm centres.

GRID

Grid colour: Recommended colour options: Black (RAL 9005)

Alternative grid colour options: Global White (GW) / Silver Grey (RAL 9006). On request: Beige (RAL 1001)



Product: MicroLook Wood V Perforation Lg 8002 Oak 600 x 600 mm

PERFORMANCE

LIGHT REFLECTANCE



EN ISO 7742-2 & 3

Veneers	Plain	Perforated Rg 3003	Perforated Rg 8013	Perforated Lg 8002
Ash	57%	54%	49%	54%
Oak	30%	30%	26%	30%
Red Oak	34%	33%	30%	33%
US Cherry	29%	28%	23%	28%
US Walnut	14%	14%	12%	16%

Laminates	Plain
Curly Maple	72%
Pear	31%
Canadian Maple	53%

The light reflectance values shown above are the results of testing, however, due to the natural variation in wood veneers there may be some small deviation from these published values.

SOUND ABSORPTION



EN ISO 354 & EN ISO 11654

α_w	NRC	125	250	500	1000	2000	4000	Hz
Veneers Plain								
0.10(L)		0.10	0.30	0.15	0.10	0.05	0.10	0.15
Veneers Rg 3003 (3%)								
0.30(L)		0.35	0.45	0.40	0.35	0.30	0.25	0.25
Veneers Rg 8013 (13%)								
0.65(L)		0.70	0.45	0.80	0.85	0.65	0.60	0.55
Veneers Lg 8002 (2%)								
0.40(L)		0.50	0.50	0.65	0.55	0.40	0.35	0.30

Sound Absorption Class = up to Class C

Perforated tiles have an acoustic fleece on the rear.

SOUND ATTENUATION



EN ISO 10848-2 & EN ISO 717-1

D_{nfw}	125	250	500	1000	2000	4000
Veneers Plain						
41 dB	21,3	34,6	37,1	43,2	44,9	42,2
Veneers Rg 3003 (3%)						
35 dB	21,1	33,8	33,4	34,9	35,9	38,5
Veneers Rg 8013 (13%)						
22 dB	19,2	25,8	22,9	22,3	21,4	24,0
Veneers Lg 8002 (2%)						
29 dB	20,7	29,7	28,2	28,1	29,3	33,8



EN 13501-1

EEA Euroclass B-s2, d0



EN 12667 & ISO 8301

$\lambda = 0.18 \text{ W/m K}$
(Laminates)
 $\lambda = 0.12 \text{ W/m K}$
(Veneers)



$\leq 70 \% \text{ RH}$



15 YEAR
guarantee



Laminates
 $\approx 10 \text{ kg/m}^2$
Wood Veneers
 $\approx 10.5 \text{ kg/m}^2$



Agency: EPCOM- 04/2012 - Copyright: Studio VU
PX1216 / Armstrong Building Products - RCS Besançon B 784 131 575 Printed on free chlorine paper.

Advisory note: It is very important that Armstrong Wood panels are climatised prior to installation. Relative humidity between 25% and 70% and temperatures between 10°C and 30°C must be maintained throughout the life of the product.

The Armstrong logo, consisting of the word 'Armstrong' in a bold, sans-serif font, with a registered trademark symbol (®) to its upper right. The text is enclosed within a circular border.

Armstrong®